

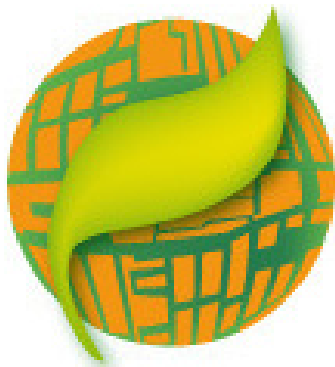
ENERGY AND URBAN PLANNING:

FIRST STEPS TOWARDS ENERGY NEUTRAL CITIES

INTERNATIONAL WORKSHOP

DUBLIN


19 NOVEMBER 2009



ENPIRE

ENERGY IN URBAN PLANNING
AND IN RESTRUCTURING AREAS

Supported by

Intelligent Energy  Europe

Purpose of the workshop

To present the results from the EU funded project ENPIRE including the development of guidelines from experience of seven building projects in the Czech Republic, Denmark, France, The Netherlands, Ireland, Italy and Spain.

Venue

UCD Urban Institute Ireland (UII)
School of Architecture, Landscape
and Civil Engineering
University College Dublin
Ireland

Target Audience

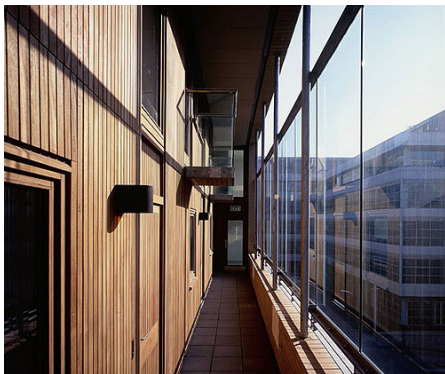
European Local Authorities and
Housing Cooperatives

AGENDA

- 09:30 **Welcome**
Professor J. Owen Lewis, CEO SEI
- 09:45 **Energy and Urban Planning - Introduction to the ENPIRE project**
Project Coordinator Erik Alsema
W/E Consultants, The Netherlands
- 10:10 **Urban Area Renewal**
Case Study Albertslund, Denmark
In Albertslund the Danish Housing company, BO-VEST, is responsible for the largest and most costly renovation plan for social housing in Denmark. Approximately 2200 industrialised concrete housing units will go through an urban renewal renovation.
Jakob Klint, Kuben Urban Renewal, Denmark
- 10:35 **Comparing Energy Options**
Case Study Breda, The Netherlands
The Heuvel refurbishment project in Breda involves a residential area with a great variety of housing blocks and local facilities. The restructuring process comprises demolition, renovation and building new houses, a new retail centre, a new school and changing an old monumental church into a multifunctional centre.
Frans Lemmens, Housing Corporation WonenBreburch, The Netherlands
- 11:00 **Coffee**
- 11:30 **ENPIRE Guidelines**
Guidelines developed within the ENPIRE project for setting ambitions and embedding agreements for preparing, planning and implementing energy and urban planning.
Nicolas Pouget, Solving France, France
- 12:00 **Improving Energy Efficiency in Eastern European cities - Case Study Havírov, Czech Rep**
The project in Havírov comprises blocks of dwellings which were originally built in a Stalinistic architectural style (SORELA) which have protected monumental status and their facades may not be altered. The social housing company MRA intends to improve the quality of these dwellings while realizing strategic energy asset management.
Tomas Vimmr, STU-K, Czech Republic and Stepanka Llitecka, MEPCO
- 12:30 **Lunch**



Above and the two below: Clarion Quay apartments, Dublin



Above and below: Tyrrelstown Housing Project, Fingal County



**13:30 Improving Energy Performance
Case Study, Dublin, Ireland**

Tyrrelstown Housing is a new development for social housing. It comprises of the construction of new family homes including both houses and apartments in storey blocks together with communal welfare facilities including a crèche, community centre, estate management offices and a public park.

Stephen Cavanagh, Gerry Cahill Architects GCA, Ireland

13:50 13:50 Dundalk 2020

Dundalk, as part of the EU funded Concerto II Holistic project, is setting out to provide a showcase of some of the most innovative technologies, policies and practices that will be needed in order to develop sustainable energy communities in Ireland and elsewhere. SEI is acting as project coordinator for the HOLISTIC project, and as project manager for the broader Dundalk 2020 project. Declan Meeley, SEI

**14:10 Delivering Performance
South Dublin County Council (SDCC)**

SDCC have developed a process which enhances the delivery of cost effective energy retrofitting which will be demonstrated in three current projects highlighting existing situations, suburban conditions and potential opportunities.

Paddy deRoe, SDCC

14:30 Discussion Forum

Chair: Vivienne Brophy, UCD

15:00 Coffee

15:30 Transport to City centre

16:00 Walking tour - Dublin Urban Regeneration

led by Gerry Cahill, Director GCA

Commence Merrion Square, the Georgian heart of the city's 'pattern and history' - walk across the river Liffey to Custom House Quay and the Irish Financial Services Centre, an area of recent regeneration. Visit to award winning mixed use residential Clarion Quay Project and top floor duplex apartment. Approx 90 mins. (<http://www.gca.ie/UPCL.html>)

18:30 approx.

Milano's (Italian café) on Excise Walk (adjacent to Clarion Quay) for pizza/beer/wine

Exhibition

A poster exhibition will display the seven ENPIRE demonstration projects at the conference venue and will be further displayed in Irish Local Authority headquarters in December 2009